



Wilsonview Russell BISCOTTI

V: MORGAN
Wilsonview Khan MORGAN-ET

M: HILL
Avery Rose of Dogwood HILL-ET

MV: AVERY
Bancrest Lester AVERY

Starke Töchter mit weiten und hohen Hintereuter & viel Zentralband

12.11 2010JE B%: 78 KK: BB Tö.: 113

Milch: 119

Fett: 110 92

Eiweiss: 117 98

Exterieur		Töchter: 50		
		80	100	120
Gesamtnote	106		■	
Fundament	102		■	
Euteranlage	96		■	
Grösse	114 klein		■	gross
Brustbreite	126 schmal		■	breit
Beckenneigung	99 gestellt		■	abgez.
Tiefe	wenig		■	viel
Beckenbreite	113 schmal		■	breit
Milchcharakter	124 derb		■	edel
Hinterbeinwink.	99 steil		■	gewinkelt
Hinterbeinstellung	kuhhässig		■	parallel
Fesseln	97 weich		■	steil
Voreuter	94 wenig		■	viel
Aufh. h. Höhe	108 tief		■	hoch
Eutertiefe	82 tief	■		hoch
Zentralband	122 schwach		■	stark
Zitzenlänge	110 kurz		■	lang
Zitzenvert. vorne	109 innen		■	aussen
Zitzenvert. hinten	innen		■	aussen

Funktionelle Merkmale		80	100	120
Zellzahl		94	■	
Nutzungsdauer			■	



Will Do Mor RUSSEL



Botelho Russell 147





14JE00437 WILL DO MOR RUSSELL
USA 000113678558
MOR X AVERY X BERRETTA



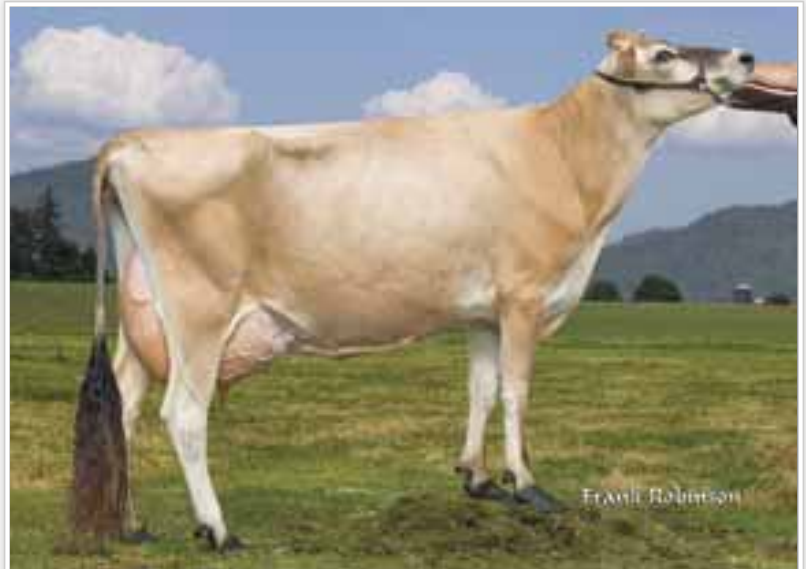
RUSSELL



Botelho Russell 147

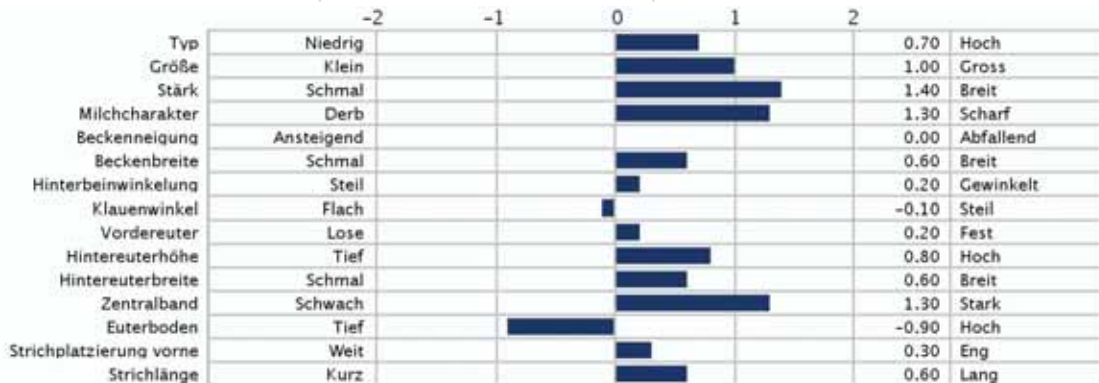


GR Holig Russell Ceceia Minna



Wilsonview Russell Biscotti

Leistung		Exterieur		Management Merkmale	
JPI	108	Typ	0.70	SCS	2.83
NM\$	288	JUI	0.94	Productive Life	1.9
Milch	596	% Typ Si	83	Töchter-Fruchtbarkeit / % Sicherheit	-0.3/70
Eiweiß	26	Töchter / Betriebe	50/31	SCR / Rel %	-0.7/80
% Eiweiß	0.03				
Fett	47				
% Fett	0.10				
% Si	91				
Töchter / Betriebe	113/48				



Information for December 2011, provided by the following:
Production: USDA-Genomic, Type: USDA/AJCA Genomic
Daughter Calving Ease: IB/MACE



Genetic Evaluation Summary

JEUSAM113678558 WILL DO MOR RUSSELL RUSSELL
 0014JE00437 Born 16-SEP-03 7.21%INB 12%R

Sire: [JEUSAM664195](#) WILSONVIEW KHAN MORGAN-ET 01-MAY-96 4.39% 11%
 Dam: [JEUSAF110710839](#) AVERY ROSA OF DOGWOOD HILL ET 15-DEC-98 5.08% 13%
 MGS: [JEUSAM659230](#) BANCREST LESTER AVERY 06-MAR-93 3.14% 11%

PRODUCTION	GMACE 11*DEC				LIFETIME PROFIT INDEX		Rel
Herds	48	Kg %RK %Dev		GMACE LPI	1468	76	
Daughters	113 Milk	1243	93%	PRODUCTION	1398		
Lactations	Fat	80	99% +0.29	DURABILITY	115		
Reliability	80% Protein	51	97% +0.06	HEALTH & FERTILITY	-45		

CONFORMATION	GMACE 11*DEC		Herds: 31		Daughters: 50		Reliability: 63%		
SCORECARD	Rating	%RK	-15	-10	-5	0	5	10	15
Conformation	4	75%							
Mammary System	2	57%							
Feet & Legs	-3	26%							
Dairy Strength	11	98%							
Rump	7	90%							

DESCRIPTIVE			-15	-10	-5	0	5	10	15
Udder Depth	6D	Deep							
Udder Texture		Fleshy							
Median Suspensory	14	Weak							
Fore Attachment	-2	Weak							
Front Teat Placement	4C	Wide							
Rear Attachment Height	6	Low							
Rear Attachment Width		Narrow							
Rear Teat Placement		Wide							
Teat Length	2L	Short							
Foot Angle	-1	Low							
Heel Depth		Shallow							
Bone Quality		Coarse							
Rear Legs Side View	7C	Straight							
Set of Rear Legs		Undesirable							
Rear Legs Rear View		Hocked-in							
Stature	3	Short							
Height at Front End		Low							
Chest Width	0	Narrow							
Body Depth		Shallow							
Angularity	11	Non-Angular							
Loin Strength		Weak							
Rump Angle	1L	High							
Pin Setting		Undesirable							
Pin Width	4	Narrow							

FUNCTIONAL	Rating	Rel	Difference from Breed Average (SD)						Breed Avg.	
Herd Life	101GM	61%	Short						Long	100
Somatic Cell Score	2.88GM	78%	Undesirable						Desirable	3.00
Lactation Persistency	105GPA	34%	Poor						High	100
Daughter Fertility	96GM	55%	Poor						High	100
Milking Speed	104GPA	27%	Slow						Fast	100
Milking Temperament	102GPA	26%	Nervous						Calm	100
Calving Ability	98GPA	31%	Difficult						Easy	100
Daughter Calving Ability	100GPA	23%	Difficult						Easy	100