

# WILLROCK-ET

Gillette WILLROCK ET BLF CVF

aAa: 234

CA 000.0781.6548.8



V: MARION  
Veazland MARION ET BLF CVF

M: 2nd WIND  
Gillette Blitz 2nd WIND ET

MV: BLITZ  
Fustead Emory BLITZ ET BLF CVF

**ISEL: 1387 IML: 131**  
**IPQ: 126**

12.11 GI B%: 85 KK: Tö.: 207  
Milch: +1430 kg  
Fett: +26 kg -0.32%  
Eiweiss: +45 kg -0.02%

## Exterieur

Töchter: 159

		-2	0	+2
<b>Format</b>				
<b>Becken</b>				
<b>Gliedmassen</b>	<b>+1.20</b>		█	
<b>Euteranlage</b>	<b>+2.81</b>		█	
Grösse	+1.04	klein	█	gross
RelHöheVorderhand		tief		hoch
Brustbreite	+1.08	schmal	█	breit
Körpertiefe	+1.85	wenig	█	viel
Lende		schlecht		gut
Milchcharakter	+2.03	wenig	█	viel
Beckenneigung	+0.51	ansteig.	█	abfall.
Beckenbreite	+1.18	schmal	█	breit
Knochenqualität		wenig		viel
H'beinwinkelung	-1.20	gerade	█	gewinkelt
Fesseln		weich		steil
Trachten	+1.47	wenig	█	viel
Hinterbeinstellung	+0.93	n. innen	█	parallel
Bewegung	+0.51	schlecht	█	ideal
Aufhä. Vorne	+1.19	lose	█	fest
Aufhä. h. Höhe	+2.96	tief	█	hoch
Aufhä. h. Breite		schmal		breit
Zentralband	+2.84	n. vorh.	█	stark
Eutertiefe	+0.50	tief	█	hoch
Drüsigkeit		schwer		drüsig
Zitzenlänge v.	-0.67	kurz	█	lang
Zitzenvert. vorne	+1.86	weit	█	eng
Zitzenvert. hinten	+1.67	weit	█	eng

## Funktionelle Merkmale

		80	100	120
Zellzahl	97		█	
Nutzungsdauer	112		█	
Geb.verlauf di.	104		█	
Geb.verlauf Tö.	93		█	
NRR Töchter	99			
Rastzeit	85		█	
Melkbarkeit	110		█	
Persistenz	101			
BCS				

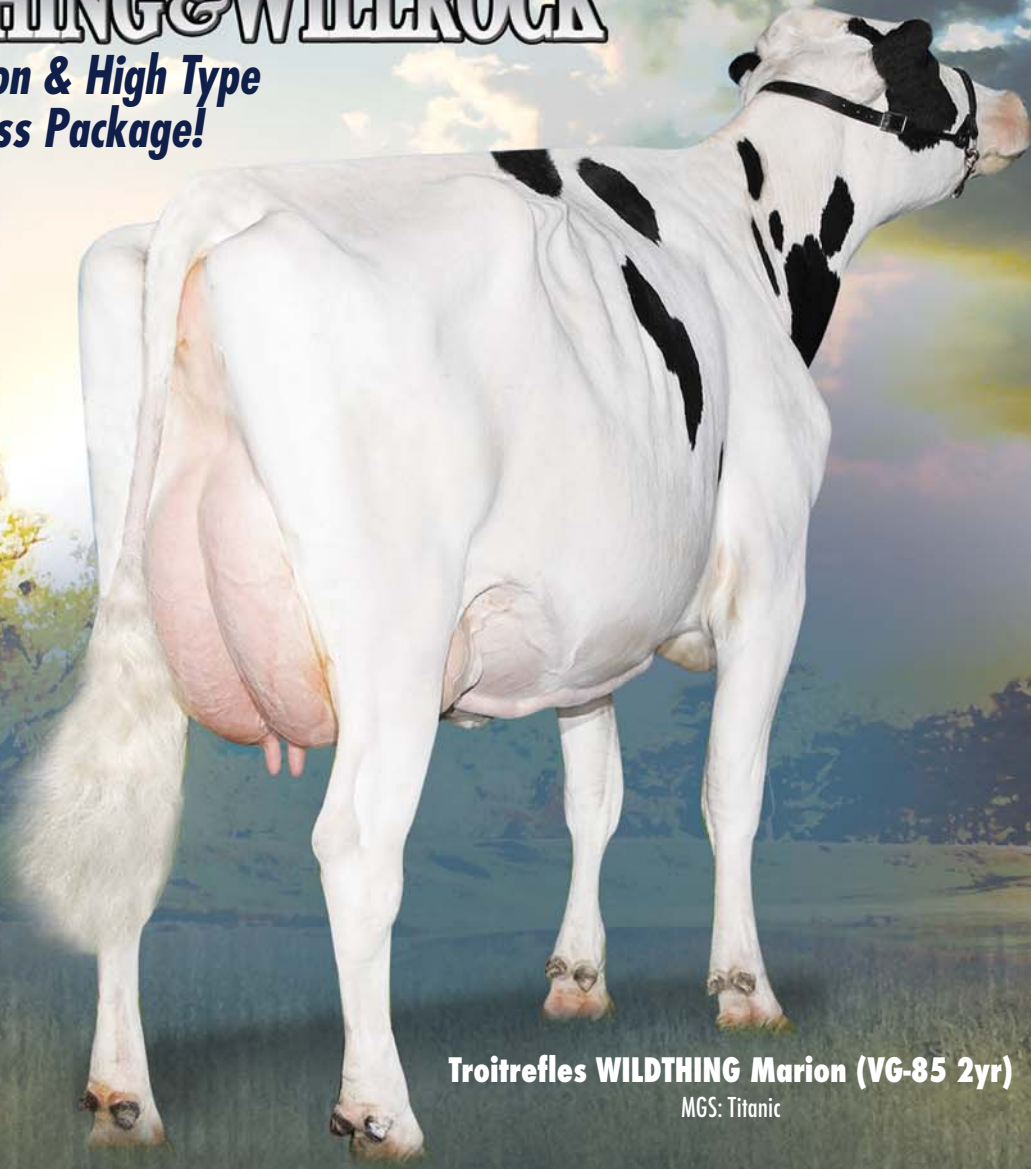


Select Star SA, 85. Rte. de Presinge  
Tel: 022 349 73 73 Fax: 022 348 23 42  
Kundendienst Telefon: 044 430 06 75 oder 079 347 25 15



# WILDTHING & WILLROCK

**High Production & High Type  
in One Outcross Package!**



**Troitreffles WILDTHING Marion (VG-85 2yr)**

MGS: Titanic



**Gillette WILDTHING (EX-EXTRA)**  
250H00903 CANM7816547 aAa 531



**Dam:**  
**Gillette Blitz 2nd Wind (VG-88 27\*)**  
Also dam of #1 Type Bull Windhammer



**Gillette WILLROCK (EX-EXTRA)**  
250H00902 CANM7816548 aAa 234



[www.generations.com](http://www.generations.com)

# WILDTING & WILLROCK

**Gillette WILDTING (EX-EXTRA)**  
 250H000903 CANM7816547 aAa 531  
 Marion x Blitz x Storm

**Gillette WILLROCK (EX-EXTRA)**  
 250H000902 CANM7816548 aAa 234  
 Marion x Blitz x Storm

Resulting from a split embryo and have identical proofs

PRODUCTION				LIFETIME PROFIT INDEX			
GEBV 11*DEC				GLPI			
	Kg	%RK	%Dev	PRODUCTION	DURABILITY	HEALTH & FERTILITY	Rel
Herds	124	1788	97%	2077	1112	919	91
Daughters	207	39	79%	1112	919	46	
Lactations	253	55	97%				
Reliability	96%	Protein					91%

CONFORMATION			
GEBV 11*DEC			
	Rating	%RK	
SCORECARD	12	98%	
Conformation	12	98%	
Mammary System	9	94%	
Feet & Legs	8	92%	
Dairy Strength	9	96%	

DESCRIPTIVE			
Rump	25	Deep	
Udder Depth	12	Fleshy	
Udder Texture	13	Weak	
Median Suspensory	5	Weak	
Fore Attachment	8C	Wide	
Front Teat Placement	12	Low	
Rear Attachment Height	12	Narrow	
Rear Attachment Width	12	Wide	
Rear Teat Placement	8C	Short	
Teat Length	6S	Low	
Foot Angle	9	Shallow	
Heel Depth	4	Coarse	
Bone Quality	5	Straight	
Rear Legs Side View	5S	Undesirable	
Set of Rear Legs	3	Hocked-in	
Rear Legs Rear View	5	Short	
Stature	-1	Low	
Height at Front End	2	Narrow	
Chest Width	3	Shallow	
Body Depth	9	Non-Angular	
Angularity	7	Weak	
Loin Strength	4L	High	
Rump Angle	4	Undesirable	
Pin Setting	6	Narrow	

FUNCTIONAL			
	Rating	Rel	
Herd Life	104G	75%	Short
Somatic Cell Score	3.02G	92%	Undesirable
Lactation Persistency	100G	91%	Poor
Daughter Fertility	101G	80%	Poor
Milking Speed	108G	89%	Slow
Milking Temperament	96G	87%	Nervous
Calving Ability	105G	91%	Difficult
Daughter Calving Ability	104G	82%	Difficult



**Swissess WILLROCK Paulex (VG-85 2yr)**  
 2nd Sr 2yr Bedford 2011  
 MGS: Primettime



**Dihana WILDTING Evy (GP-84 2yr)**  
 MGS: Spirtie



**Donnelly WILD Rose (VG-85 2yr)**  
 MGS: Witness

**VEAZLAND MARION**  
 #1 Milk Bull

**GILLETTE BLITZ 2ND WIND (VG-88 27\*)**  
 02-02 365 17,734 645 3.6% 536 3.0% kg  
 Former #1 LPI & Type Cow

**FUSTEAD EMORY BLITZ**  
 Former #1 LPI Bull

**BRAEDALE SECOND CUT (VG-86 2yr 23\*)**  
 02-02 365 18,981 933 4.9% 622 3.3% kg

**MAUGHLIN STORM**

**BRAEDALE GYPSY GRAND (VG-88 37\*)**  
 05-06 365 15,779 753 4.8% 515 3.3% kg

- Over 200 Daughters in 9 out of 10 Provinces
- International Mating Sire
- Complete Outcross and High Fertility
- Easy to Use, no Holes Proof

Phone: 905.873.8700  
 or 1.800.244.5744  
 Fax: 905.877.1394  
 info@generations.com  
 www.generations.com

